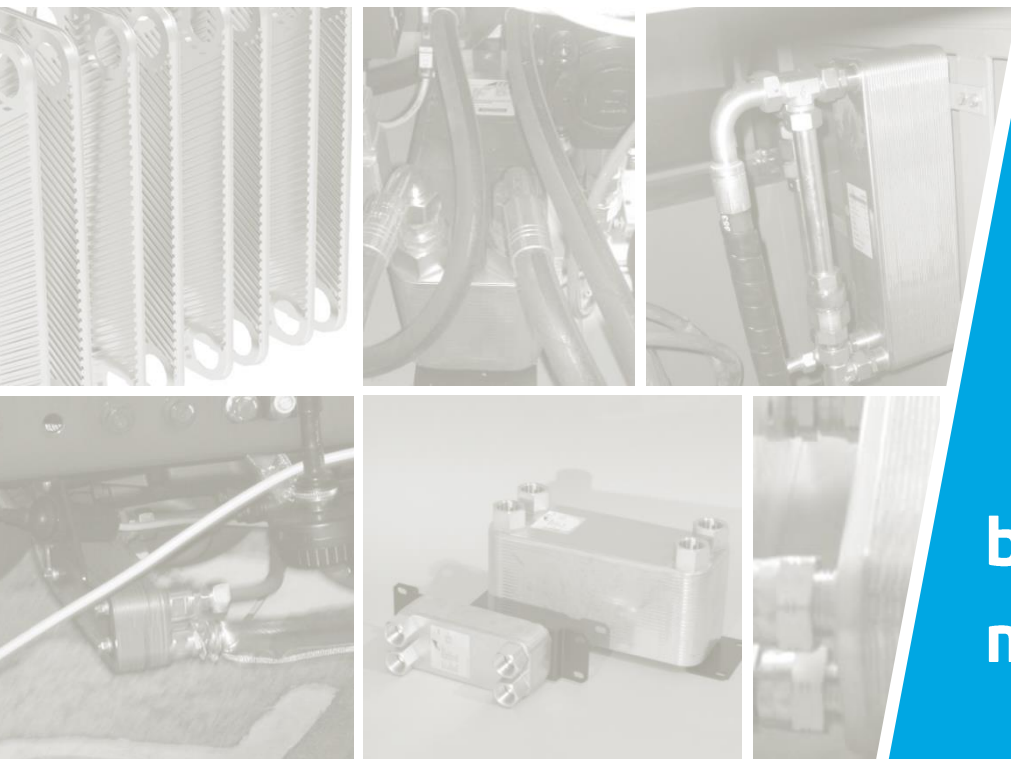




Thermal Systems/Special Ranges E-Series / Plate Heat Exchangers



**be different.
make a difference.**

Special Ranges

Brazed Plate Heat Exchangers / E-Series



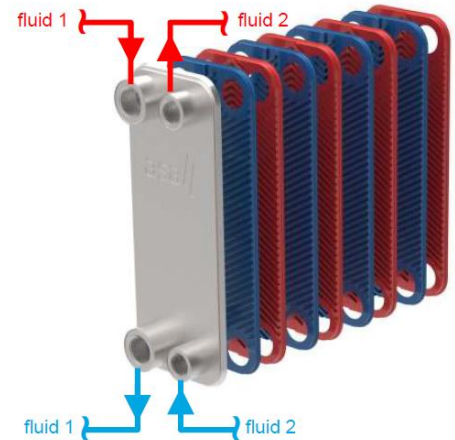
Construction

The Plate Heat Exchangers ASA-PL is designed for hydraulic fluid and lubricating. The benefits of plate heat exchangers are:

- strength
- installation dimension
- efficiency
- low maintenance

Design

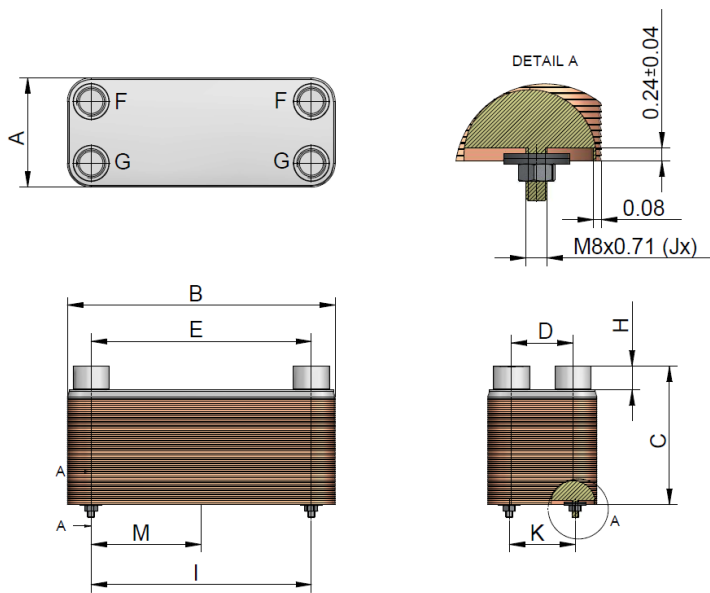
The structure of the ASA-PL cooling surfaces are thin, profiled plates made of acid-proof stainless steel (1.4306) to make the heat exchanger compact and powerful. The plates have a profile that separate the water and oil channels in a way that achieves optimum heat transfer with a cover plate on each side. The entire heat exchanger is brazed together at the outer edges and at the inner points of contact. The cooler can be installed in a feed pump circuit and in return lines with large pressure variations. This product is also suitable for water, air and gas cooling.



Standard Range

Our standard range of plate heat exchanger covers a large field of applications to ensure you competitive pricing, high quality and short delivery times. Contact us for more information and non-standard coolers to work out the optimal solution for you.

Technical Data



material

plates	steel 1.4306
upper plate	steel 1.4306
connectors	steel 1.4306
solder	copper

temperature

max.working temperature	-256°F to +392°F
-------------------------	------------------

pressure

test pressure	624 PSI
max. pressure	435 PSI

order number	description	A	B	C	D	E	F	G	H	I	J	K	M	weight
		[in]	[in]	[in]	[in]	[in]			[in]	[in]	#bolt	[in]	[in]	[lbs]
ILWPL10014E KU00	ASA – PL 10-14 E	2.87	8.07	2.30	1.65	6.77	NPT ½"	NPT ½"	0.79	4.72	2	-	-	2.7
ILWPL20020E KU00	ASA – PL 20-20 E	3.15	7.64	2.99	1.57	6.06	NPT ¾"	NPT ¾"	0.79	5.91	2	-	-	3.9
ILWPL22030E KU00	ASA – PL 22-30 E	4.17	12.05	4.37	1.97	9.84	NPT 1"	NPT ¾"	1.06	9.84	4	1.57	-	11.3
ILWPL22060E KU00	ASA – PL 22-60 E	4.17	12.05	7.18	1.97	9.84	NPT 1"	NPT ¾"	1.06	9.84	4	1.57	-	18.9
ILWPL40050E KU00	ASA – PL 40-50 E	4.88	11.97	6.24	2.76	9.84	NPT 1"	NPT 1"	1.06	9.84	4	2.95	-	19.0
ILWPL53020E KU00	ASA – PL 53-20 E	4.88	19.84	3.47	2.52	17.48	NPT 1"	NPT 1"	1.06	17.72	4	2.95	-	18.3
ILWPL53040E KU00	ASA – PL 53-40 E	4.88	19.84	5.34	2.52	17.48	NPT 1"	NPT 1"	1.06	17.72	4	2.95	-	28.4
ILWPL53060E KU00	ASA – PL 53-60 E	4.88	19.84	7.22	2.52	17.48	NPT 1"	NPT 1"	1.06	17.72	4	2.95	-	38.6
ILWPL70020E KU00	ASA – PL 70-20 E	9.69	20.79	3.50	6.85	17.95	NPT 1½"	NPT 1½"	1.06	16.54	6	5.91	8.27	39.4
ILWPL70060E KU00	ASA – PL 70-60 E	9.69	20.79	7.28	6.85	17.95	NPT 1½"	NPT 1½"	1.06	16.54	6	5.91	8.27	81.7
ILWPL70120E KU00	ASA – PL 70-120 E	9.69	20.79	12.95	6.85	17.95	NPT 1½"	NPT 1½"	1.06	16.54	6	5.91	8.27	145.2
ILWPL70160E KU00	ASA – PL 70-160 E	9.69	20.79	16.85	6.85	17.95	NPT 1½"	NPT 1½"	1.06	16.54	6	5.91	8.27	199.8

This data sheet and the corresponding scale drawings are to be used as a general guideline and technical overview of our products. Please contact us if more exact information is needed. As we are constantly improving our products, their characteristics, dimensions and weights may also change, although we do our best to incorporate these changes continually. asa assumes no liability for any information therein, any errors, omissions, misprints, nor any direct or indirect damages, losses or costs resulting therefrom. Any cooling performances and general technical values indicated in this catalogue are measured at a test bench according to asa testing procedures or calculated, based on such tests. Due to different conditions in testing and application environments the performance may also vary by +/- 15%. Because there is no standardized testing procedure, tests used by other manufacturers could have different results. Therefore we recommend all products to be checked under the system operating conditions. This is also true for vibrations and mechanical stress as well as for pressure peaks and thermal stress and any other relevant factors. General tolerances according to DIN ISO 2768-vL, General tolerances for casted parts according to EN ISO 8062-3 (DCTG 10). Tolerances for rubber parts are according to ISO 3302-1 (class M4-F+C). The tolerances of welding seams are defined by quality group D according to EN ISO 10042, if it is not specified on the actual scale drawing or data sheet. In addition to that we point out that any data sheet and corresponding scale drawing is no substitution for the manual.
DD-E-series-us-rev1 © asa technology, November 2020

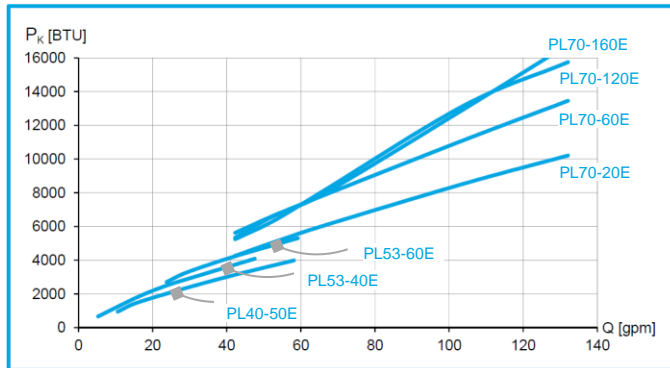
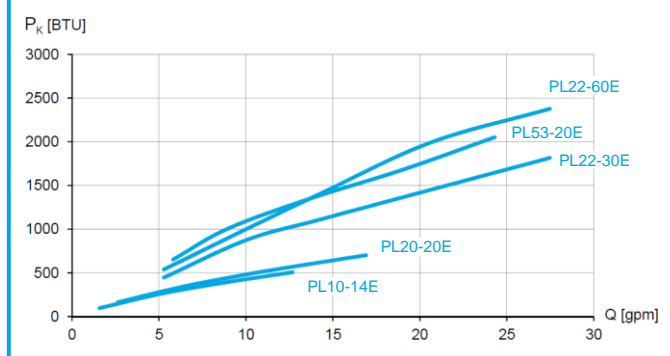
Special Ranges

Brazed Plate Heat Exchangers / E-Series

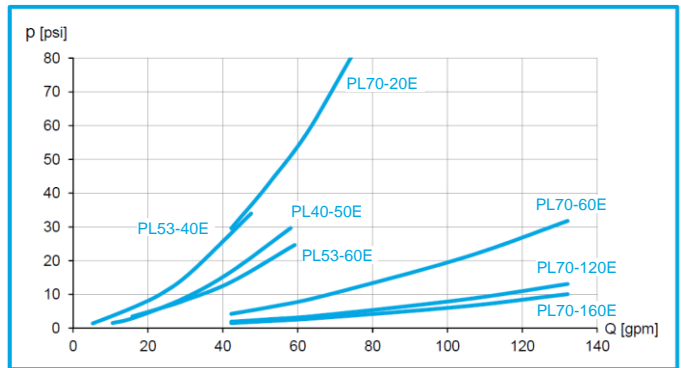
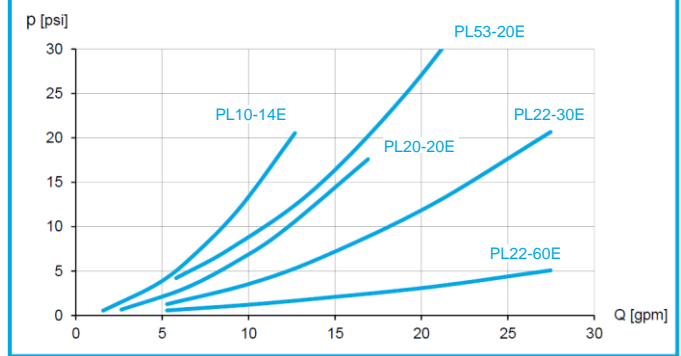


The shown performance curves created at an oil / water ratio of 2:1 with hydraulic oil ISO VG 32 at an oil inlet temperature of 140°F and a water entrance of 68°F. Please contact us for other technical parameters to select the optimal cooler for you

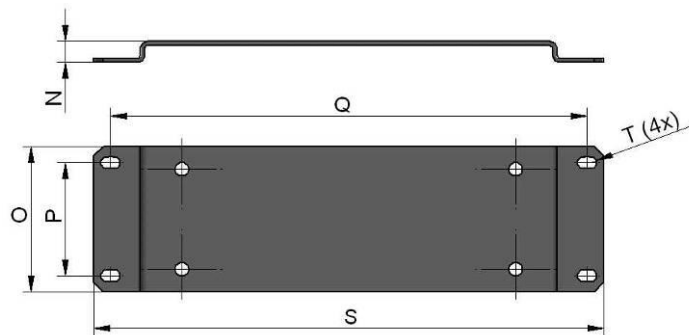
cooling performance



pressure drops (oil side)



Mounting brackets



cooler number with mounting brackets

ILWPL10014EPU00
ILWPL20020EPU00
ILWPL22030EPU00
ILWPL22060EPU00
ILWPL40050EPU00
ILWPL53020EPU00
ILWPL53040EPU00
ILWPL53060EPU00
ILWPL70020EPU00
ILWPL70060EPU00
ILWPL70120EPU00
ILWPL70160EPU00

order number	description	N	O	P	Q	S	T slot hole	weight
		[in]	[in]	[in]	[in]	[in]		[lbs]
ILWPZMON10U00	Mounting plate PL 10-	0.63	2.28	1.30	8.98	9.96	0.35 x 0.59	0.7
ILWPZMON20U00	Mounting plate PL 20-	0.63	2.76	1.97	10.04	11.02	0.35 x 0.59	1.1
ILWPZMON22U00	Mounting plate PL 22-	0.63	2.91	1.97	13.78	14.76	0.35 x 0.59	1.5
ILWPZMON40U00	Mounting plate PL 40-	0.63	4.29	3.35	14.06	15.04	0.35 x 0.59	2.2
ILWPZMON53U00	Mounting plate PL 53-	0.63	4.21	3.35	21.85	22.83	0.35 x 0.59	3.3
ILWPZMON70U00	Mounting plate PL 70-	0.63	10.00	9.06	21.73	22.83	0.43 x 0.79	7.7

Please contact us for details or get further information at www.asahydraulik.com or support@asahydraulik.com
Please read the manual before operating

This data sheet and the corresponding scale drawings are to be used as a general guideline and technical overview of our products. Please contact us if more exact information is needed. As we are constantly improving our products, their characteristics, dimensions and weights may also change, although we do our best to incorporate these changes continually. asa assumes no liability for any information therein, any errors, omissions, misprints, nor any direct or indirect damages, losses or costs resulting therefrom. Any cooling performances and general technical values indicated in this catalogue are measured at a test bench according to asa testing procedures or calculated, based on such tests. Due to different conditions in testing and application environments the performance may also vary by +/- 15%. Because there is no standardized testing procedure, tests used by other manufacturers could have different results. Therefore we recommend all products to be checked under the system operating conditions. This is also true for vibrations and mechanical stress as well as for pressure peaks and thermal stress and any other relevant factors. General tolerances according to DIN ISO 2768-vL. General tolerances for casted parts according to EN ISO 8062-3 (DCTG 10). Tolerances for rubber parts are according to ISO 3302-1 (class M4-F+C). The tolerances of welding seams are defined by quality group D according to EN ISO 10042, if it is not specified on the actual scale drawing or data sheet. In addition to that we point out that any data sheet and corresponding scale drawing is no substitution for the manual.
DD-E-series-us-rev1 © asatechnology, November 2020

**be different.
make a difference.**

USA

asa hydraulik of America Inc
160 Meister Avenue 20 A
Branchburg, New Jersey 08876
Tel.: +1 800 473 94 00
Tel.: +1 908 541 15 00
sales_us@asahydraulik.com

AUSTRIA

asa technology GmbH
Prager Strasse 280
A-1210, Vienna
Tel.: +43 1 292 40 20
support@asahydraulik.com

CHINA

安飒液压科技（苏州）有限公司
asa Hydraulik Technology (Suzhou) Co.Ltd
江苏省苏州市工业园区方洲路 128 号 6 区 B 幢
Area 6, Building B,
Fangzhou Road No 128,
Suzhou industrial park,
Suzhou City, Jiangsu Province
Tel.: +86 512 62381988
suzhou@asahydraulik.com

AUSTRALIA

asa Products Pty Ltd
Bentley Street 4/15
3016 Williamstown, Victoria
Tel.: +61 3 9397 6129
melbourne@asahydraulik.com

INDIA

ASAhdraulik India Pvt Ltd
C1/102/9, GIDC, Palej, Dt.Bharuch
Gujarat - 392220
Tel.: +91 22 28195557
salesindia@asahydraulik.com

