

Offline Cooling/CC Series

TT rail 20/30lpm



General Data and Details

The oil / air coolers of our CC series are autonomous cooling systems with an integrated circulation pump. They work as a separate cooling unit or as a filter cooling unit with an adequate filter. The benefits of such circulation coolers are a constant cooling performance and a higher durability, because there are no pressure vibrations or peaks in the cooler unit.

Conditions of use:

Maximum oil temperature: 212°F, maximum air temperature: 122°F. Motors can be used up to an altitude of 1.500m. For other conditions of use please contact our engineers.

Noise level:

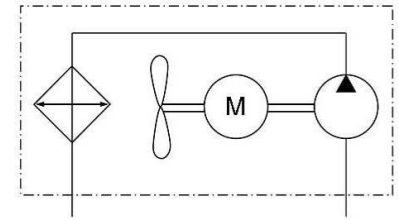
Noise levels are measured in accordance with 2006/42/EC and EN ISO 3744.

Dimensions:

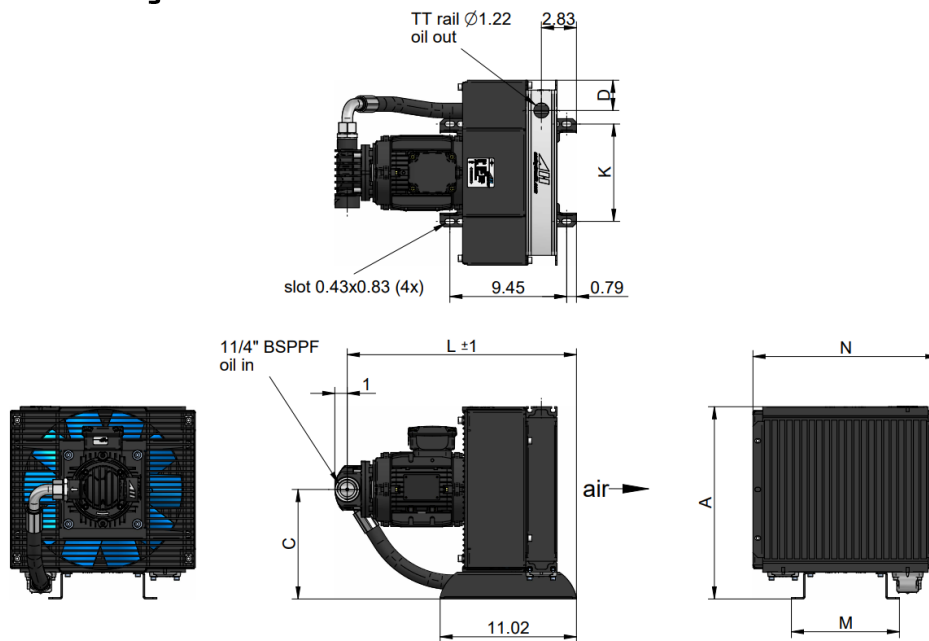
General tolerance according to DIN 2768-v

Connection

The **asa** rail system is the first worldwide flexible mounting and connection system for air blast heat exchangers. It gives you the free choice of the connector direction through turnable ports. The rail slots in the radiator are the frame structure not only for connecting the ports, also for various possible mounting arrangements such as bypass systems, mounting of the cooler to aggregates, measurement devices and much more. Please contact us to discover the huge potential of this system for your application.



Scale Drawing



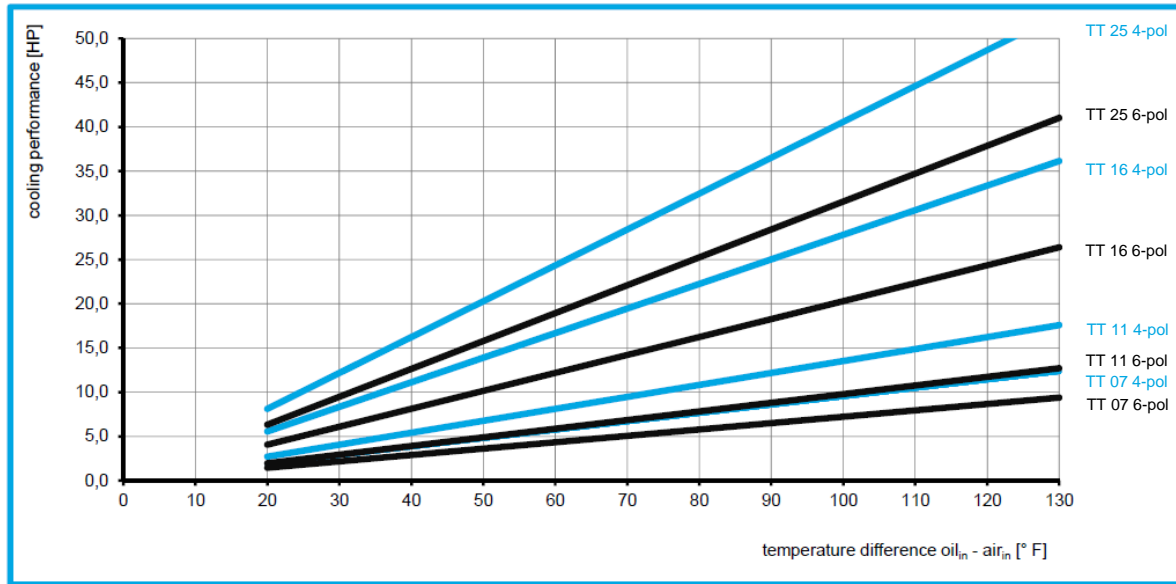
Dimensions

order number	description	A	C	D	K	L	M	N
		[in]	[in]	[in]	[in]	[in]	[in]	[in]
ASATT07RA48CCU00	TT 07 rail CC 4-pol	13.98	8.07	2.83	5.31	19.41	6.18	12.60
ASATT11RA48CCU00	TT 11 rail CC 4-pol	15.55	8.86	2.44	7.87	19.49	8.74	14.96
ASATT16RA48CCU00	TT 16 rail CC 4-pol	20.47	11.34	2.60	7.87	20.12	8.74	18.11
ASATT25RA48CCU00	TT 25 rail CC 4-pol	25.98	14.09	2.68	11.81	20.12	12.68	21.97
ASATT07RA67CCU00	TT 07 rail CC 6-pol	13.98	8.07	2.83	5.31	19.41	6.18	12.60
ASATT11RA67CCU00	TT 11 rail CC 6-pol	15.55	8.86	2.44	7.87	19.49	8.74	14.96
ASATT16RA67CCU00	TT 16 rail CC 6-pol	20.47	11.34	2.60	7.87	20.12	8.74	18.11
ASATT25RA67CCU00	TT 25 rail CC 6-pol	25.98	14.09	2.68	11.81	20.12	12.68	21.97

Offline Cooling/CC Series

TT rail 20/30lpm

Performance



Technical Data

order number	description	Oil flow	max. working pressure	motor power	motor current	rotation	air flow	noise level	weight
		[gpm]	[PSI]	[HP]	[A]	[rpm]	[SCFM]	[dB(A)]	[lbs]
ASATT07RA48CCU00	TT 07 rail CC 4-pol	9.5	145	1.50	2.17	1720	335	69	64
ASATT11RA48CCU00	TT 11 rail CC 4-pol	9.5	145	1.50	2.17	1720	600	74	74
ASATT16RA48CCU00	TT 16 rail CC 4-pol	9.5	145	1.50	2.17	1720	1024	79	84
ASATT25RA48CCU00	TT 25 rail CC 4-pol	9.5	75	1.50	2.17	1720	2520	83	106
ASATT07RA67CCU00	TT 07 rail CC 6-pol	6.3	145	0.75	tba*	tba*	225	60	66
ASATT11RA67CCU00	TT 11 rail CC 6-pol	6.3	145	0.75	tba*	tba*	405	61	76
ASATT16RA67CCU00	TT 16 rail CC 6-pol	6.3	145	0.75	tba*	tba*	741	67	86
ASATT25RA67CCU00	TT 25 rail CC 6-pol	6.3	115	0.75	tba*	tba*	1644	73	107

The maximum suction pressure is -0,4 bar. The viscosity range is <100cSt. Motor voltage: 230/400V @ 50Hz*. The protection level is IP55.

Design

radiator material	aluminium
radiator air fin shape	wavy
pump type	gerotor
pump material (housing)	aluminium
sheet metal material	powder coated steel
suitable fluids	mineral oil

Connection (UN 1 5/8")

ILLZATT53U16K	requires 1pc per cooler
---------------	-------------------------

Options

asa rail connector	ILLZSET5U20U00 (UN 1 5/8")
temperature switch	122°F, 140°F
Rail filter	integrated spin on filter (page 13)
motor data*	alternative voltages, frequencies, protection levels, etc on request

